

EZ-IP 2.0

Surveillance made simple

2018



CONTENT

01
Overview

02
Highlights

03
**Product
Family**

04
Application



01

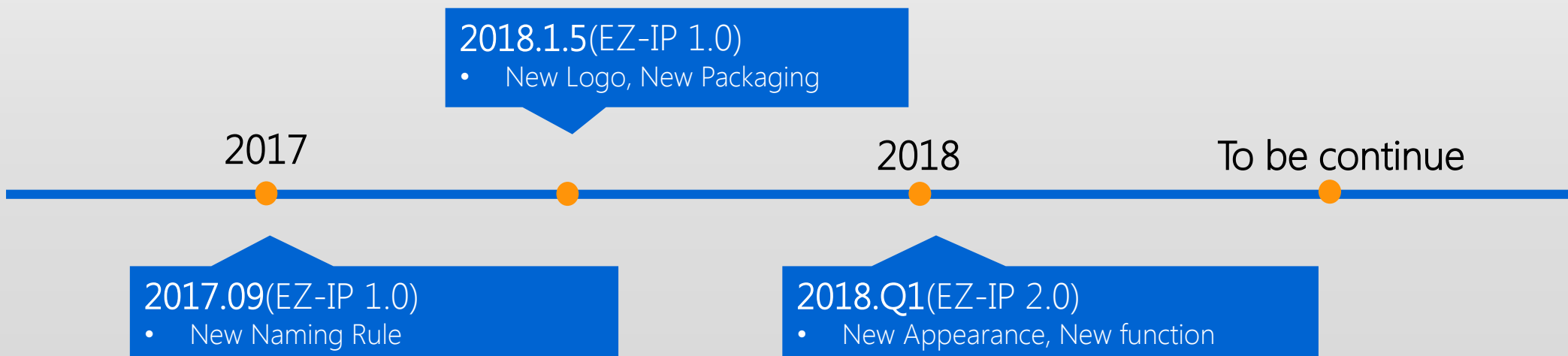
Overview

Backgrounds • Naming Rule • Packaging • Appearance
Service and Support • Products Comparison

Overview — Backgrounds

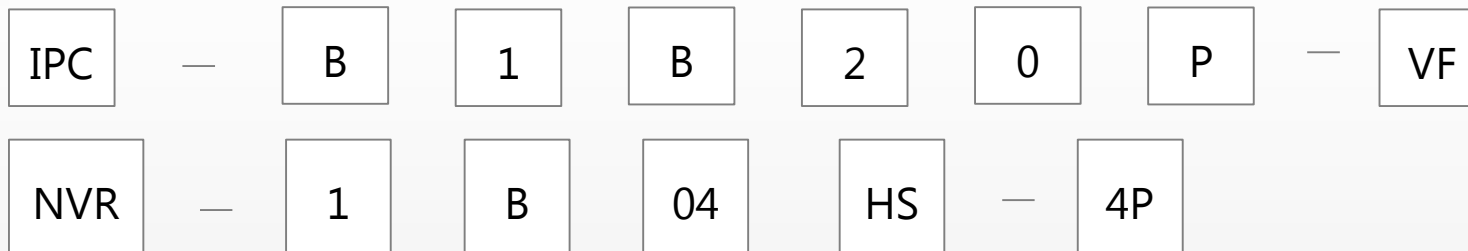
With the mission of “Surveillance made simple”, EZ-IP continuously provide an easy to install, easy to use, high security, high quality IP surveillance system for customers. Along with the popularization of H.265 technology, the conventional H.264 technology has gradually lost competitiveness in the market. Therefore, EZ-IP 2.0 which adopts H.265 technology is launched to compete with Hiwatch/Hilook and Shenzhen Company, to help our customers to gain more market and build the city moat of IP surveillance system.

Let everyone enjoy IP system!

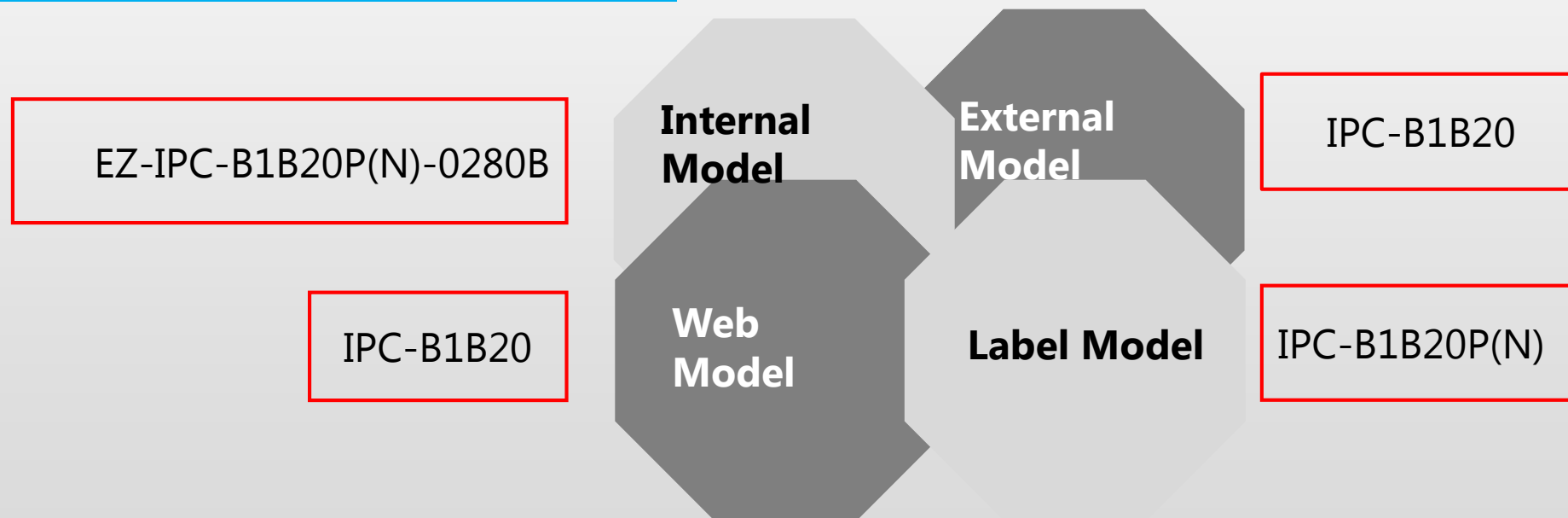


01

Overview — Naming Rule



Note (Taking IPC-B1B20 as an example):



**Pay attention to the new naming rule*



Overview — Packaging



01

Overview — Appearance



EZ-IP 2.0

New design appearance

Coming soon

Vari-focal IPC will be released in June

Dahua

3 Years
Warranty

EZ-IP

1 Year
Warranty
by default



Note: EZ-IP Warranty is 1 year by default, can be changed to meet local legal requirements

01

Baseline



The baseline of EZ-IP and Dahua are independent, it can't support mutually upgrade

02

Collocation



EZ-IP NVR can work with Dahua IPC, and EZ-IP IPC also can work with Dahua NVR. There is no limit of collocation

03

Mobile APP



EZ-IP utilize DMSS APP

04

Tools



Configtool, smartpss, smart player for example

05

User manual



EZ-IP adopts new EZ-IP user manual and QSG

06

Customization



EZ-IP can't support customization, except language, label and power supply.

Overview — Products Comparison

IPC Features	EZ-IP	ALPS	Dahua	Hikvision	Price
	EZ-IP 2.0	ALPS 265	Lite 265	Hilook 265	<i>EZ-IP VS Hilook</i>
Resolution	2MP/4MP	2MP/4MP	2MP/4MP/5MP/8MP	2MP/4MP	EZ-IP is more competitive than Hilook & Hiwatch
Compression	H.265+/H.265/H.264+/H.264	H.265+/H.265/H.264+/H.264	H.265+/H.265/H.264+/H.264	H.265+/H.265/H.264+/H.264	
IVS	N/A	N/A	Tripwire/Intrusion	N/A	
WDR	DWDR	DWDR	Support(except for 1230/2230)	Only special model Support	
Alarm&Audio	N/A	N/A	Vari-focal series Support	N/A	
Housing	EZ-IP new high quality housing	General high quality housing	Dahua high quality housing	Hilook housing	<i>Note: the conclusion is based on the pricelists we gathered.</i>

Overview — Products Comparison

NVR Features	EZ-IP		Dahua	Hikvision	Price
	EZ-IP 2.0 (2CH@1080P)	EZ-IP 2.0 (4CH@1080P)	NVR2000-4KS2	Hilook	<i>EZ-IP VS Hilook</i>
Support IPC Resolution	Max 3MP	Max 8MP	Max 8MP	Max 8MP	EZ-IP is more competitive than that Hilook <i>Note: the conclusion is based on the pricelists we gathered.</i>
Input Bandwidth	Max 48Mbps	Max 80Mbps	Max 80Mbps	Max 80Mbps	
Video Compression	H.265/H.264	H.265+/H.265 /H.264+/H.264	H.265+/H.265 /H.264+/H.264	H.265+/H.265 /H.264+/H.264	
Decoding Capacity	2CH@1080P 30fps	1CH@4K/4CH@1080P	1CH@4K/4CH@1080P	1CH@4K/4CH@1080P	
4K output	N/A	YES(except 16ch)	YES(except 16ch)	Yes(no 16ch)	
Reset Button	N/A	YES	YES	N/A	
Email	N/A	YES	YES	YES	
Multi-Language	YES	YES	YES	YES	



02

Highlights

High Quality • Smart H.265+ • 4MP

Face Optimization • Large FOV

Plug & Play • Quick Start • Smart Decode • P2P

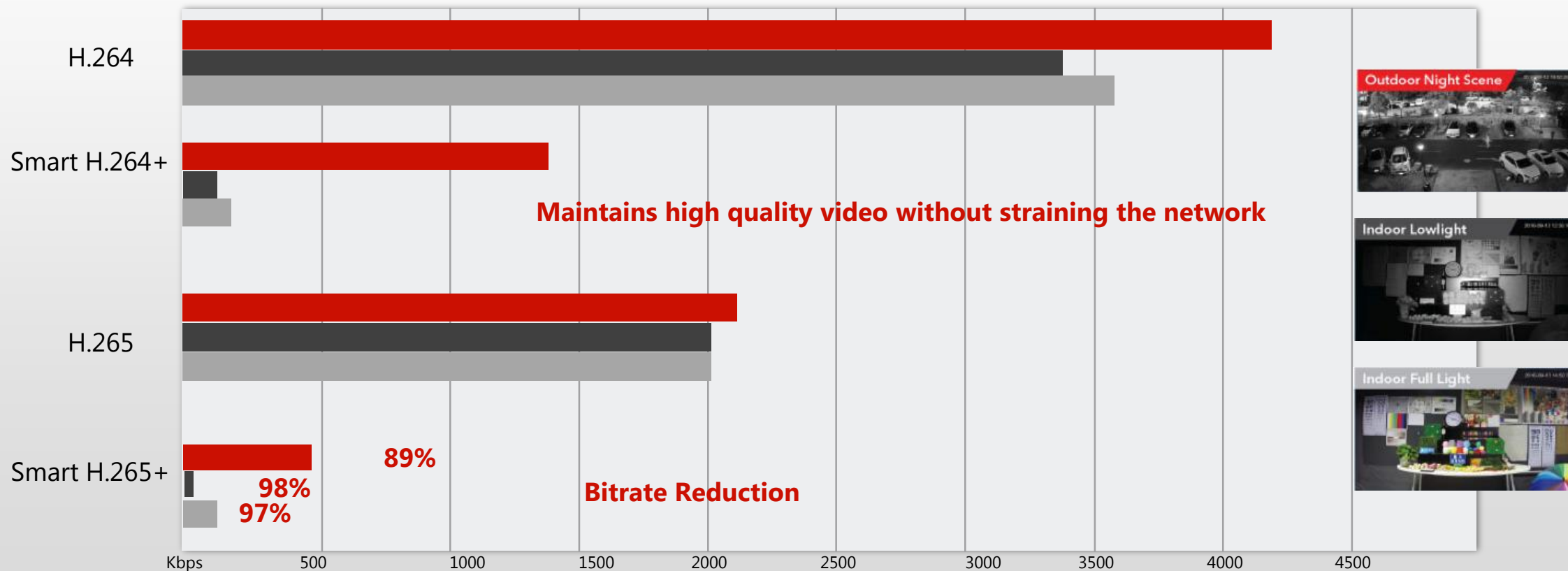
High Quality

EZ-IP is fully in line with Dahua's high quality. Stable and reliable components are utilized and various tests such as anti-vibration, water resistance, and aging tests are performed to ensure quality standards.



Highlights — Smart H.265+

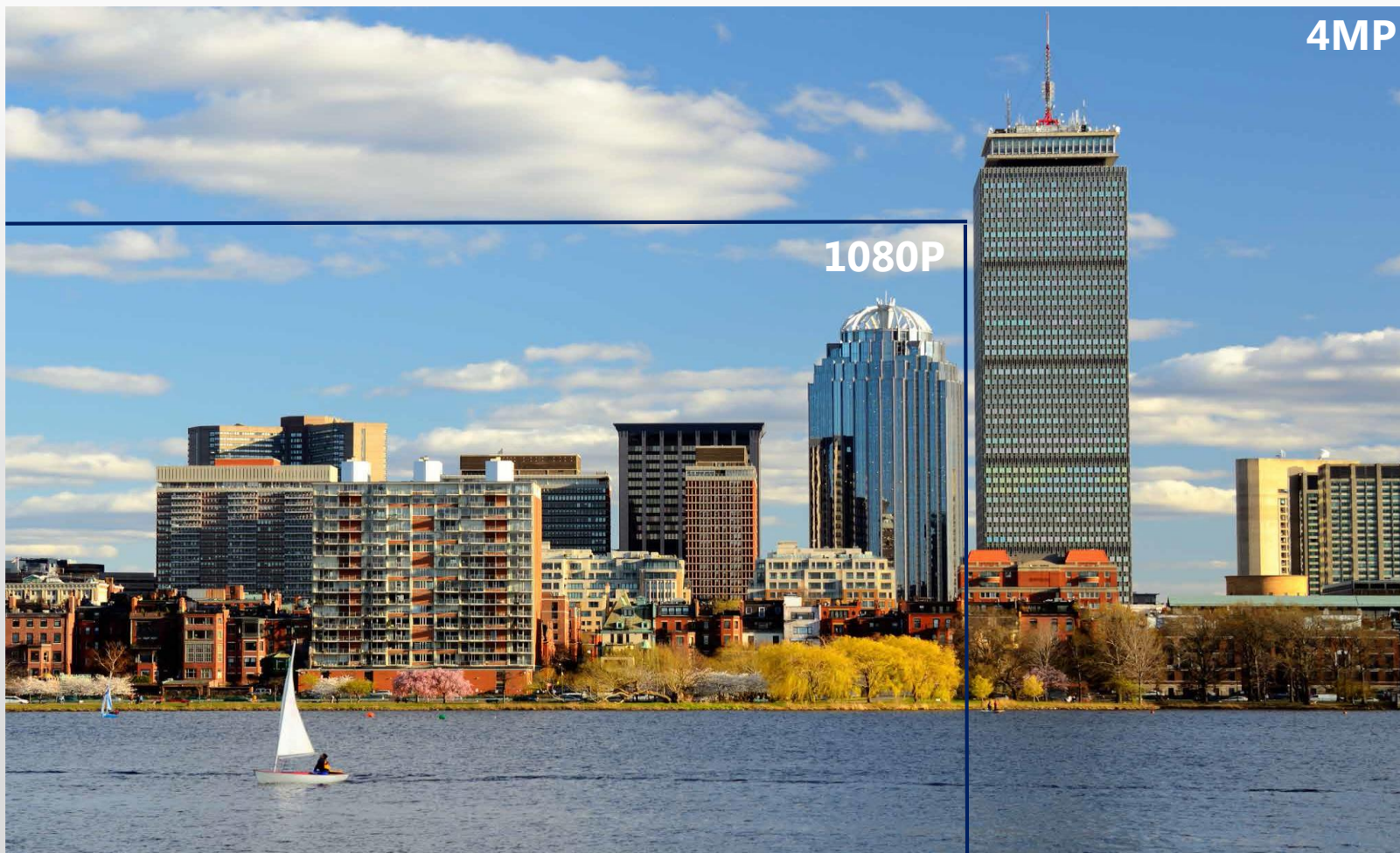
Smart H.265+ technology reduces bit rate and storage requirements by up to 70% when compared to standard H.265 video compression. *(Not all of the NVR can support H.265+, please refer to the datasheet for detailed information)*



**The above figures are based on real test conditions and the bit rate reduction may vary depending on the light and movement conditions and details of the scene.*

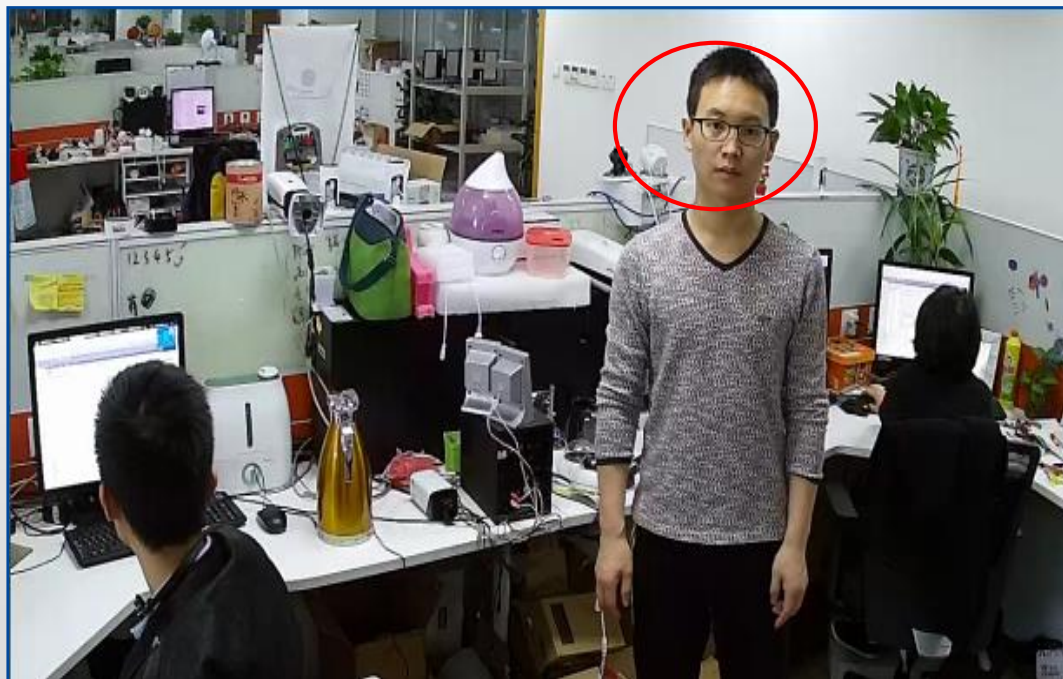
Highlights — 4MP

EZ-IP camera offers 2MP & 4MP resolution which is enough to cater the needs for home/residential and SMB applications.

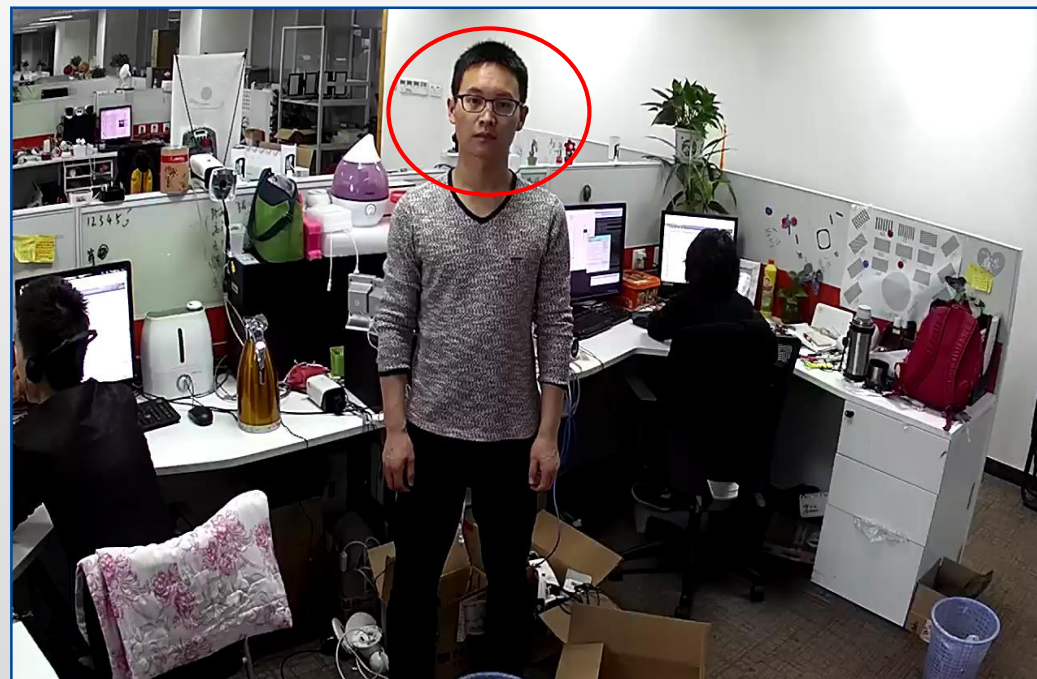


Highlights — Face Optimization

Optimizes facial images, helping users identify people of interest with clearer, more detailed portraits.



EZ-IP 2.0



H Company

Highlights — Larger FOV

Compared with traditional lens windows, a quadrangular window design can support a larger FOV with same sensor and lens.



Innovative Lens Window Design

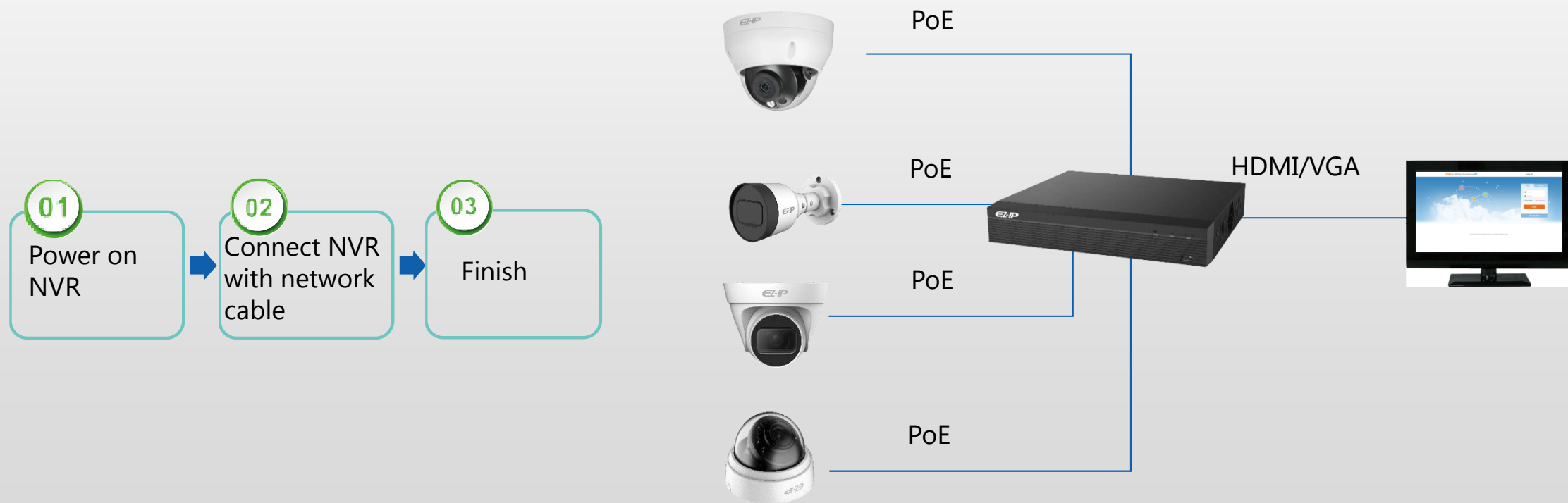


Quadrangular Window

02

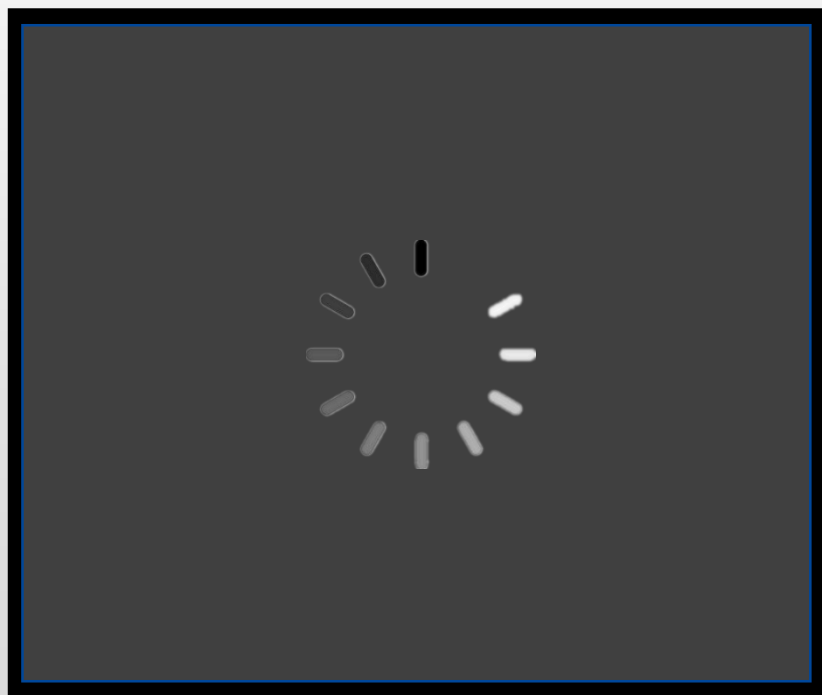
Highlights — Plug & Play

Easy and simple operation is one of the important features customers care about. EZ-IP cameras all feature PoE, enabling users to simply plug & play with PoE NVRs.



Highlights — Quick Start

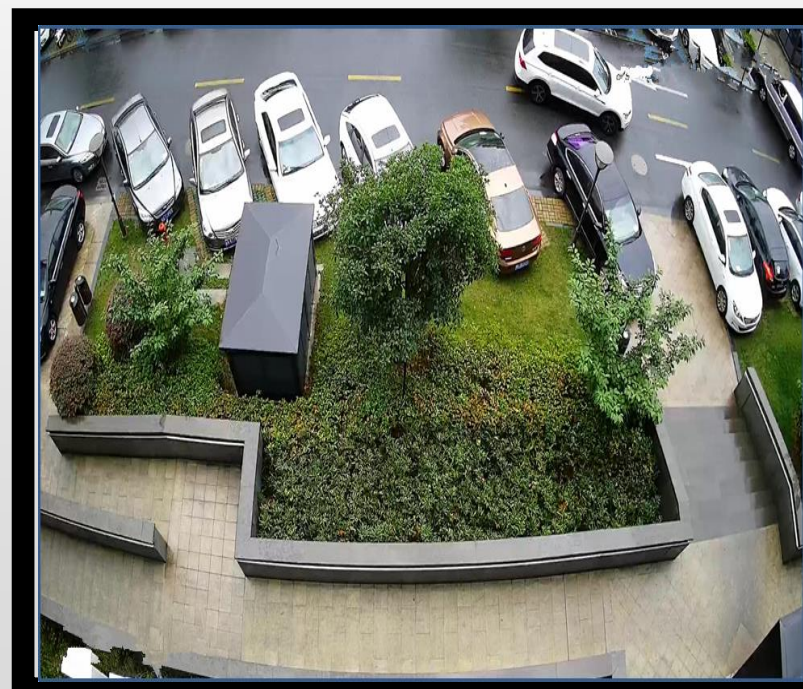
2MP cameras feature a new platform that saves on storage and employs a fast boot and special processing scheme, increasing startup speed by more than 50%.



Others

50%

Startup Speed



EZ-IP 2.0

Highlights — Smart Decode

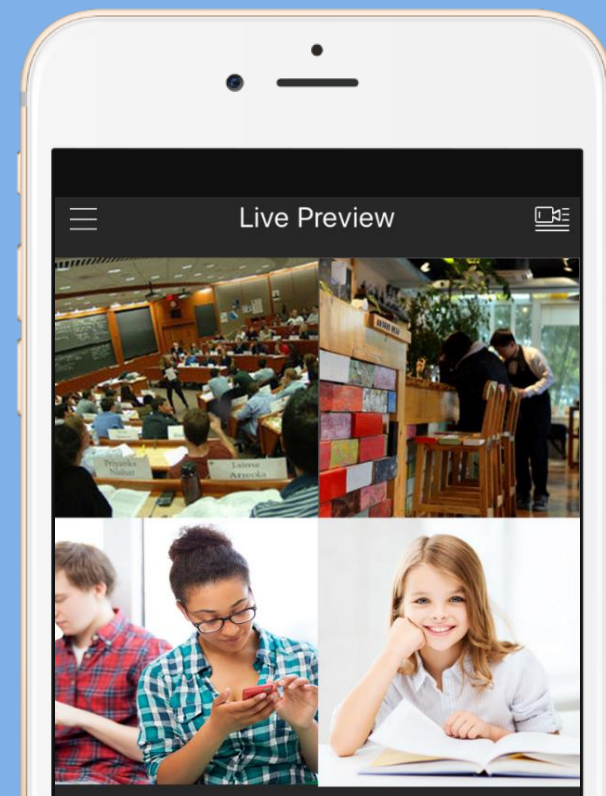
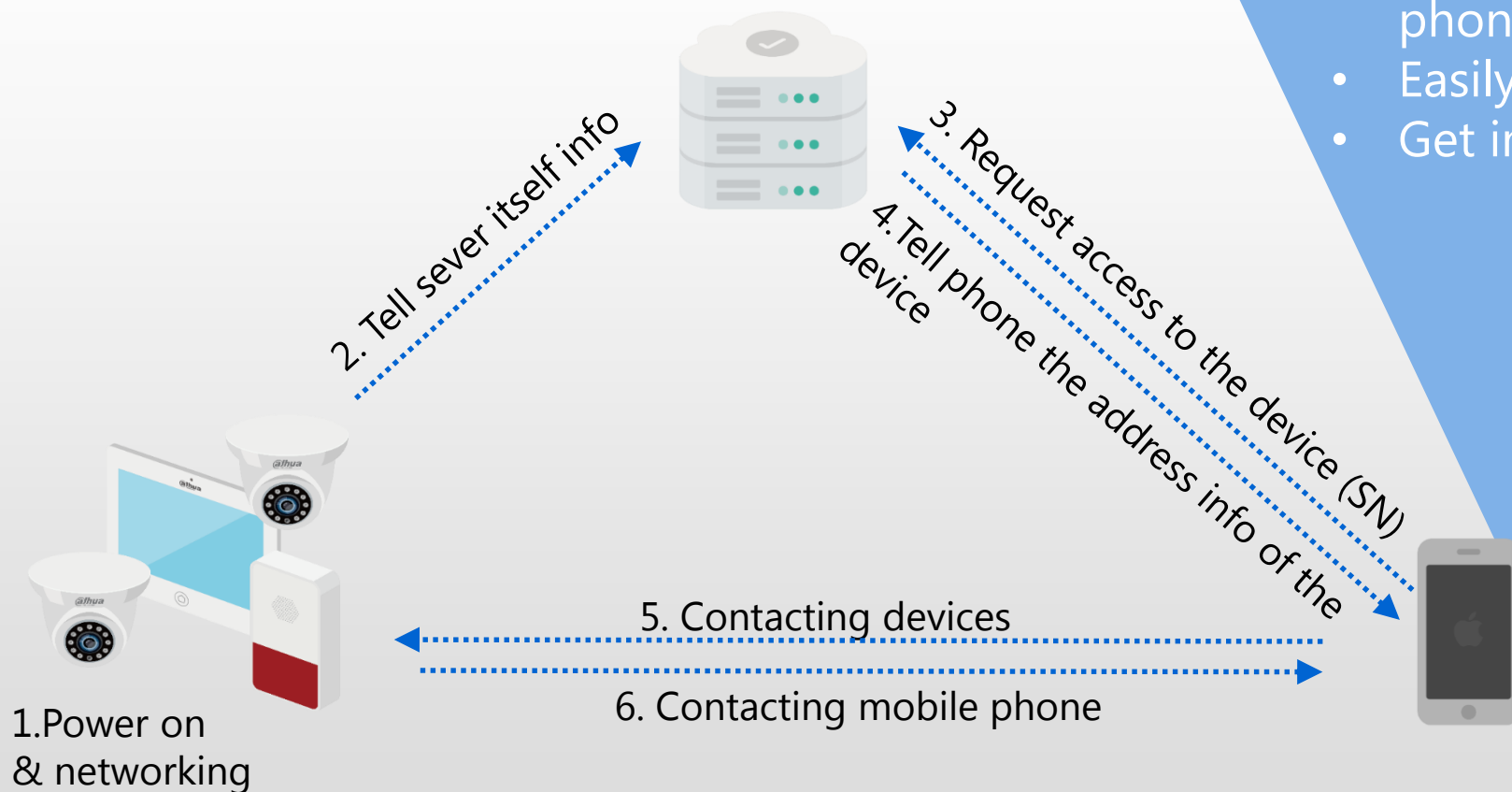
EZ-IP NVR support Smart Decode, with that system can automatically calculate decoding capacity and live view with main/sub stream freely.



Sub Stream

Highlights — P2P

- No DDNS setting, no port mapping, just scan SN QR code and connect to mobile phone
- Easily monitor at anytime and anywhere
- Get important alarm alerts immediately





03

Product Family

IP Camera • NVR

03

Product Family — IP Camera



IPC-B1B20-L
(20fps)

IPC-B1B20

IPC-B1B40

IPC-T1B20-L
(20fps)

IPC-T1B20

IPC-T1B40

IPC-D1B20-L
(20fps)

IPC-D1B20

IPC-D1B40

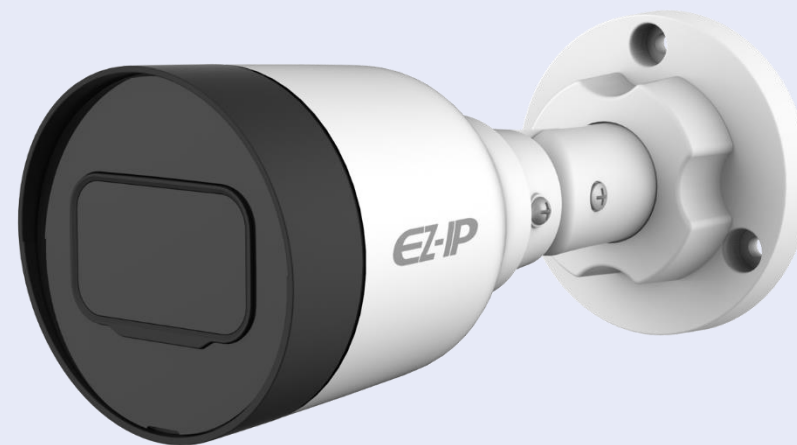
IPC-D2B20-L
(20fps)

IPC-D2B20

IPC-D2B40

IPC-B1B20-L	IPC-B1B20	IPC-B1B40
1/2.7" 2Megapixel progressive CMOS	1/2.7" 2Megapixel progressive CMOS	1/3" 4Megapixel progressive CMOS
DWDR, Day/Night(ICR), 3DNR, AWB, AGC, BLC	DWDR, Day/Night(ICR), 3DNR, AWB, AGC, BLC	DWDR, Day/Night(ICR), 3DNR, AWB, AGC, BLC
20fps@1080P(1920×1080) 25/30fps@1.3MP(1280×960)	25/30fps@1080P(1920×1080)	20fps@4MP(2688×1520)

- *H.265+ & H.265* dual-stream encoding
- *2.8 mm* fixed lens (*3.6mm* optional)
- Max IR LEDs Length *30m*
- *IP67, PoE*



IPC-T1B20-L	IPC-T1B20	IPC-T1B40
1/2.7" 2Megapixel progressive CMOS	1/2.7" 2Megapixel progressive CMOS	1/3" 4Megapixel progressive CMOS
DWDR, Day/Night(ICR), 3DNR, AWB, AGC, BLC	DWDR, Day/Night(ICR), 3DNR, AWB, AGC, BLC	DWDR, Day/Night(ICR), 3DNR, AWB, AGC, BLC
20fps@1080P(1920×1080) 25/30fps@1.3MP(1280×960)	25/30fps@1080P(1920×1080)	20fps@4MP(2688×1520)
<ul style="list-style-type: none">• <i>H.265+ & H.265</i> dual-stream encoding• <i>2.8 mm</i> fixed lens (<i>3.6mm</i> optional)• Max IR LEDs Length <i>30m</i>• <i>IP67, PoE</i>		



Product Family — IP Camera

IPC-D1B20-L	IPC-D1B20	IPC-D1B40
1/2.7" 2Megapixel progressive CMOS	1/2.7" 2Megapixel progressive CMOS	1/3" 4Megapixel progressive CMOS
DWDR, Day/Night(ICR), 3DNR, AWB, AGC, BLC	DWDR, Day/Night(ICR), 3DNR, AWB, AGC, BLC	DWDR, Day/Night(ICR), 3DNR, AWB, AGC, BLC
20fps@1080P(1920×1080) 25/30fps@1.3MP(1280×960)	25/30fps@1080P(1920×1080)	20fps@4MP(2688×1520)

- *H.265+ & H.265* dual-stream encoding
- *2.8 mm* fixed lens (*3.6mm* optional)
- Max IR LEDs Length *20m*
- *PoE*



IPC-D2B20-L	IPC-D2B20	IPC-D2B40
1/2.7" 2Megapixel progressive CMOS	1/2.7" 2Megapixel progressive CMOS	1/3" 4Megapixel progressive CMOS
DWDR, Day/Night(ICR), 3DNR, AWB, AGC, BLC	DWDR, Day/Night(ICR), 3DNR, AWB, AGC, BLC	DWDR, Day/Night(ICR), 3DNR, AWB, AGC, BLC
20fps@1080P(1920×1080) 25/30fps@1.3MP(1280×960)	25/30fps@1080P(1920×1080)	20fps@4MP(2688×1520)

- *H.265+ & H.265* dual-stream encoding
- *2.8 mm* fixed lens (*3.6mm* optional)
- Max IR LEDs Length *30m*
- *IP67, PoE*



03

Product Family — NVR



NVR1B04(08)/L

NVR1B04-4P/L

NVR1B04(08)

NVR1B04-4P

NVR1B04(08)HS/L

NVR1B04HS-4P/L

NVR1B04(08)HS

NVR1B04(08)HS-4P/8P

NVR2B16

NVR1B04(08)/L

NVR1B04-4P/L



- *4/8ch* camera input
- *1 HDD*, up to 6TB
- *H.265/H.264* decoding
- Max *48Mbps* incoming bandwidth
- Up to 3MP(2048*1536) resolution preview & playback
- Up to *2ch@1080P* decoding capacity
- HDMI/VGA simultaneous video output

- *4ch* camera input
- *1 HDD*, up to 6TB
- *H.265/H.264* decoding
- Max *48Mbps* incoming bandwidth
- Up to 3MP(2048*1536) resolution preview & playback
- Up to *2ch@1080P* decoding capacity
- HDMI/VGA simultaneous video output
- Plug & Play, 4PoE

NVR1B04(08)/L

NVR1B04-4P/L



- *4/8ch* camera input
- *1 HDD*, up to 6TB
- *H.265/H.264* decoding
- Max *48Mbps* incoming bandwidth
- Up to 3MP(2048*1536) resolution preview & playback
- Up to *2ch@1080P* decoding capacity
- HDMI/VGA simultaneous video output

- *4ch* camera input
- *1 HDD*, up to 6TB
- *H.265/H.264* decoding
- Max *48Mbps* incoming bandwidth
- Up to 3MP(2048*1536) resolution preview & playback
- Up to *2ch@1080P* decoding capacity
- HDMI/VGA simultaneous video output
- Plug & Play, 4PoE

NVR1B04/NVR1B08

NVR1B04-4P



- *4/8ch* camera input
- *1 HDD*, up to 6TB
- *H.265+/H.265/H.264+/H.264* decoding
- Max *80Mbps* incoming bandwidth
- Up to *8MP* resolution preview & playback
- Up to *4ch@1080P* decoding capacity
- HDMI/VGA simultaneous video output

- *4ch* camera input
- *1 HDD*, up to 6TB
- *H.265+/H.265/H.264+/H.264* decoding
- Max *80Mbps* incoming bandwidth
- Up to *8MP* resolution preview & playback
- Up to *4ch@1080P* decoding capacity
- HDMI/VGA simultaneous video output
- Plug & Play, 4PoE

NVR1B04/NVR1B08HS

NVR1B04HS-4P/NVR1B08HS-8P

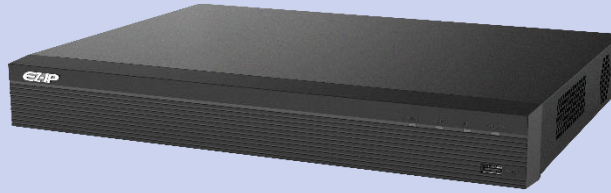


- *4/8ch* camera input
- *1 HDD*, up to 6TB
- *H.265+/H.265/H.264+/H.264* decoding
- Max *80Mbps* incoming bandwidth
- Up to *8MP* resolution preview & playback
- Up to *4ch@1080P* decoding capacity
- HDMI/VGA simultaneous video output

- *4/8ch* camera input
- *1 HDD*, up to 6TB
- *H.265+/H.265/H.264+/H.264* decoding
- Max *80Mbps* incoming bandwidth
- Up to *8MP* resolution preview & playback
- Up to *4ch@1080P* decoding capacity
- HDMI/VGA simultaneous video output
- Plug & Play, 4/8PoE

Product Family — NVR

NVR2B16



- *16ch* camera input
- *2 HDD*, up to 12TB
- *H.265+/H.265/H.264+/H.264* decoding
- Max *80Mbps* incoming bandwidth
- Up to *8MP* resolution decoding
- Up to *4ch@1080P* decoding capacity
- HDMI/VGA simultaneous video output



04

Application

SMB • Banking • Analog Upgrading

Benefits:

- Monitor entrance and exits
- External Monitoring
- Cashier safety
- Turnover growth
- Real time protection



Benefits:

- Monitor entrance and exits
- Monitor Lobby
- Monitor Cash Transaction Area
- Monitor ATM Area
- Monitor Outdoor



Benefits:

- Easy to use
- High quality
- High security
- Low bite rate



Analog

Upgrade





The smart security, **I P**romise you.

Thank you